



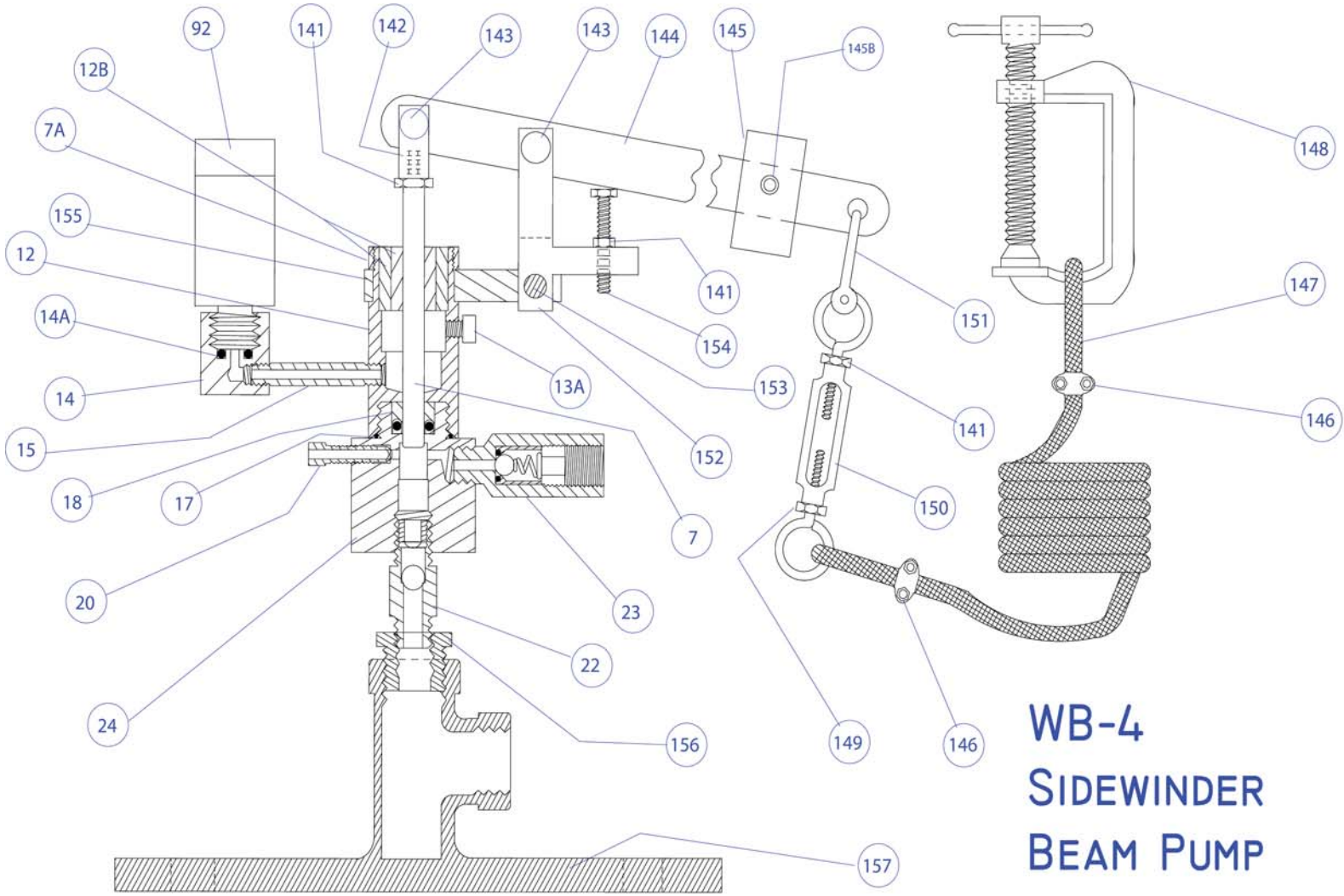
Chemical Metering Pumps
www.sidewinderpumps.com

WB-4 Walking Beam Pump



OFFICE PHONE (337) 235-9838 / FAX (337) 235-9852 / LAFAYETTE, LOUISIANA, USA

Email: sales@sidewinderpumps.com / website www.sidewinderpumps.com



**WB-4
SIDEWINDER
BEAM PUMP**

WB-4 Walking Beam Pump

WB-4 Walking Beam Parts

*7	**1	7-42-WB	Clevis-Plunger Assembly (17-4 SS)
		7-42-2-WB	Clevis-Plunger Assembly (316 SS)
		7-42-3-WB	Clevis-Plunger Assembly (440 C SS)
		7-42-6-WB	Clevis-Plunger Assembly (Titanium)
		7-42-8-WB	Clevis-Plunger Assembly (Electroless Nickel Plated)
			**includes (1) 141-42 locknut & (1) 142-42 clevis
7A	1	7A-42	Mounting Tube locknut
12	1	12-WB4-SA	Mounting Tube sub-assembly (includes bushings)
12B	1	12B-42-WB	¼ x ½ Mounting Tube Bushing (Requires One Each)
	1	12B-82-WB	½ x ¾ Mounting Tube Bushing (Requires One Each)
13A	1	13A-42	Vent
14	1	14-42	Lube Body
*14A	1	14A-42	Lube Body O-ring
15	1	15-42	Lube Tube
*17	1	17-42	Mounting Tube O-ring
*18	**1	18-42	Plunger Seal – Teflon/Carbon Graphite Uniseal
		18-42-2	Viton O-ring Seal
		18-42-3	Buna-N O-ring Seal
		18-42-4	Teflon Uniseal
		18-42-4B	Teflon Uniseal with Buna-N O-ring Insert
		18-42-4V	Teflon Uniseal with Viton O-ring Insert
		18-42-5	Chemraz O-ring Seal
		18-42-6	Hitec O-ring Seal
		18-42-7	Teflon O-ring Seal
		18-42-8	Polyblend Seal
			** O-ring seals require two back up rings #18D-42
20	1	20-42-2	Bleeder Valve
*22	1	22-42-2	Suction Check Valve
*23	1	23-42-2	Discharge Check Valve
24	1	24-42-2	Fluid Chamber
*92	1	92-42	Plunger Lube – 2 oz.
141	3	141-42	Lock Nut
142	1	142-42	Clevis
*143	2	143-42	Pin (includes cotter key)
144	1	144-42	Handle
145	1	145-42	Counter Weight
145B	1	145B-42	Counter Weight Pin (w/143A-42 cotter pin)
146	2	146-42	Cable Clamp
147	25 ft	147-42	Cable
148	1	148-42	C-clamp
149	1	149-42	Locknut
150	1	150-42	Turnbuckle
151	1	151-42	Coldshut
152	1	152-42	Link
*153	1	153-42	Pin (includes Cotter Key)
154	1	154-42	Stroke Adjuster
155	1	155-42	Yoke
156	1	156-42	Adaptor Bushing
157	1	157-42	Mounting Base

***Denotes Parts Included in Repair Kit**

WB-4 Walking Beam Pump

Mechanically operated injection pump designed to work with walking beam / pump jack units

Uses same 316 SS pump chamber, mounting tube, plunger, check valves as Mdl 42 pneumatic pump

Wet end components available in Titanium

Check Valves available in Titanium with ceramic check balls

Mounting base to mount pump to unit

360 degree adjustable handle for vertical cable alignment

Multiple options on plunger and seal arrangement

Specifications

Plunger Size	1/4 inch
Discharge Pressure (PSI)	0-3000
Maximum Output (QPD)	Strokes per Minute x 1
Inlet Connection	1/4 inch MNPT
Outlet Connection	1/4 inch FNPT

OFFICE PHONE (337) 235-9838 / FAX (337) 235-9852 / LAFAYETTE, LOUISIANA, USA

email: sales@sidewinderpumps.com

Website: www.sidewinderpumps.com