



Chemical Metering Pumps

[www.sidewinderpumps.com](http://www.sidewinderpumps.com)

# Installation and Operating Instructions

## Sidewinder Solar Electronic Timer



Sidewinder Electronic Timer can be used with chemical metering pumps that use external timer controllers.

## INSTALLATION

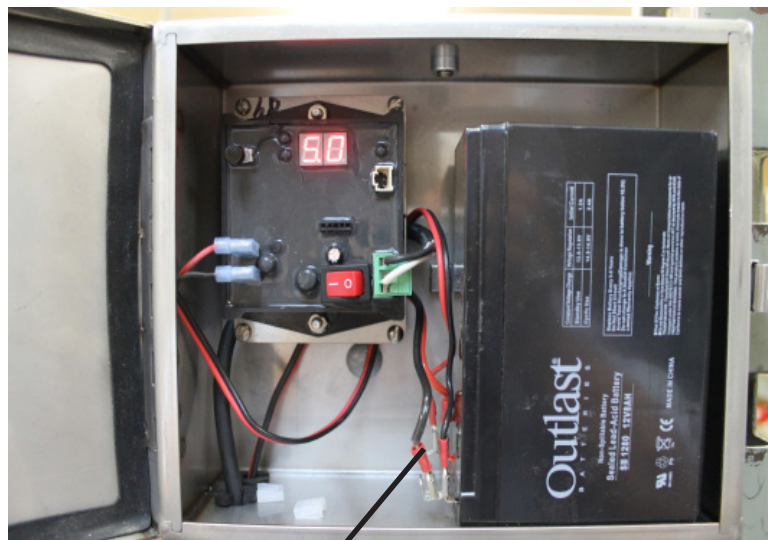
1. Remove existing timer controller
2. Install Sidewinder Electronic Timer solenoid in place of original timer controller
3. Mount pump in desired location
4. Mount controller box in desired position within six feet of the pump
5. Mount Sidewinder Electronic Timer solar panel to top of controller box with unobstructed view in southerly direction
6. Connect wire lead from solar panel to connector leading to controller box
7. Connect lead from controller box to solenoid
8. Hook up the positive (+) and the negative (-) leads to the battery mounted in the controller box



Solenoid installed on pump with wire lead to control box installed.



Solar panel installed on top of controller box



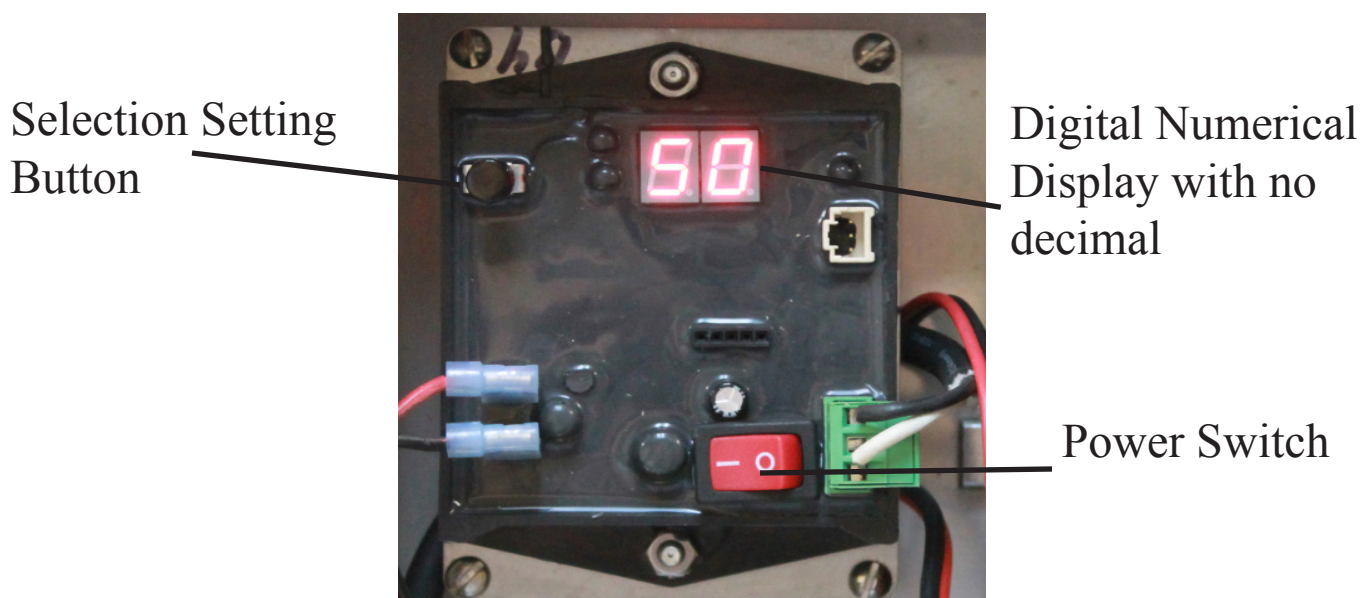
Terminal leads connected to battery

# Timer Operating Instructions

Timer can be programmed to function from 1 to 60 Stokes per Minute (SPM) or 1 to 60 Strokes per Hour (SPH)

## Setting Strokes per Minute

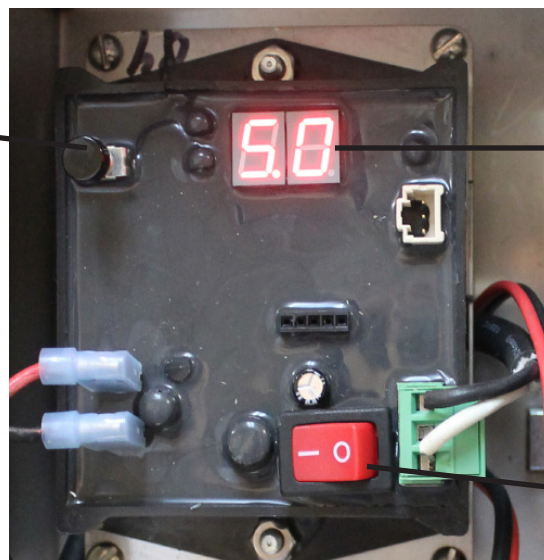
1. Supply air/gas should be turned off, turn power switch on.
2. View digital display, there should be no decimal in the digital numerical display.
3. If no decimal proceed to step 6.
4. If there is a decimal in the digital numerical display, turn power off.
5. Press and hold the selection setting button and turn power on, when powered back on there now should be no decimal in digital numerical display.
6. Using the selection setting button scroll through until desired strokes per minute is displayed and then release setting button.
7. Solenoid should begin operation, slight clicking noise can be heard.  
Turn air/gas supply on, pump should begin operating
8. NOTE: Display will not be visual when pump is idle



# Setting Strokes per Hour

1. Supply air/gas should be turned off, turn power switch on.
2. View digital display, there should be a decimal in the digital numerical display.
3. If there is a decimal proceed to step 6.
4. If there is no decimal in the digital numerical display, turn power off.
5. Press and hold the selection setting button and turn power on, when powered back on there now should be no decimal in digital numerical display.
6. Using the selection setting button scroll through until desired strokes per hour is displayed and then release setting button.
7. Solenoid should begin operation, slight clicking noise can be heard.  
Turn air/gas supply on, pump should begin operating
8. NOTE: Display will not be visual when pump is idle

Selection Setting  
Button



Digital Numerical  
Display with deci-  
mal

Power Switch





Chemical Metering Pumps

[www.sidewinderpumps.com](http://www.sidewinderpumps.com)

Sidewinder Pumps Inc.

2108 SW Evangleine Thruway

Lafayette, Louisiana 70508

Office (337) 235-9838

Fax (337) 235-9852

[quotes@sidewinderpumps.com](mailto:quotes@sidewinderpumps.com) for pricing

email: [info@sidewinderpumps.com](mailto:info@sidewinderpumps.com) for product information

website: [www.sidewinderpumps.com](http://www.sidewinderpumps.com)

