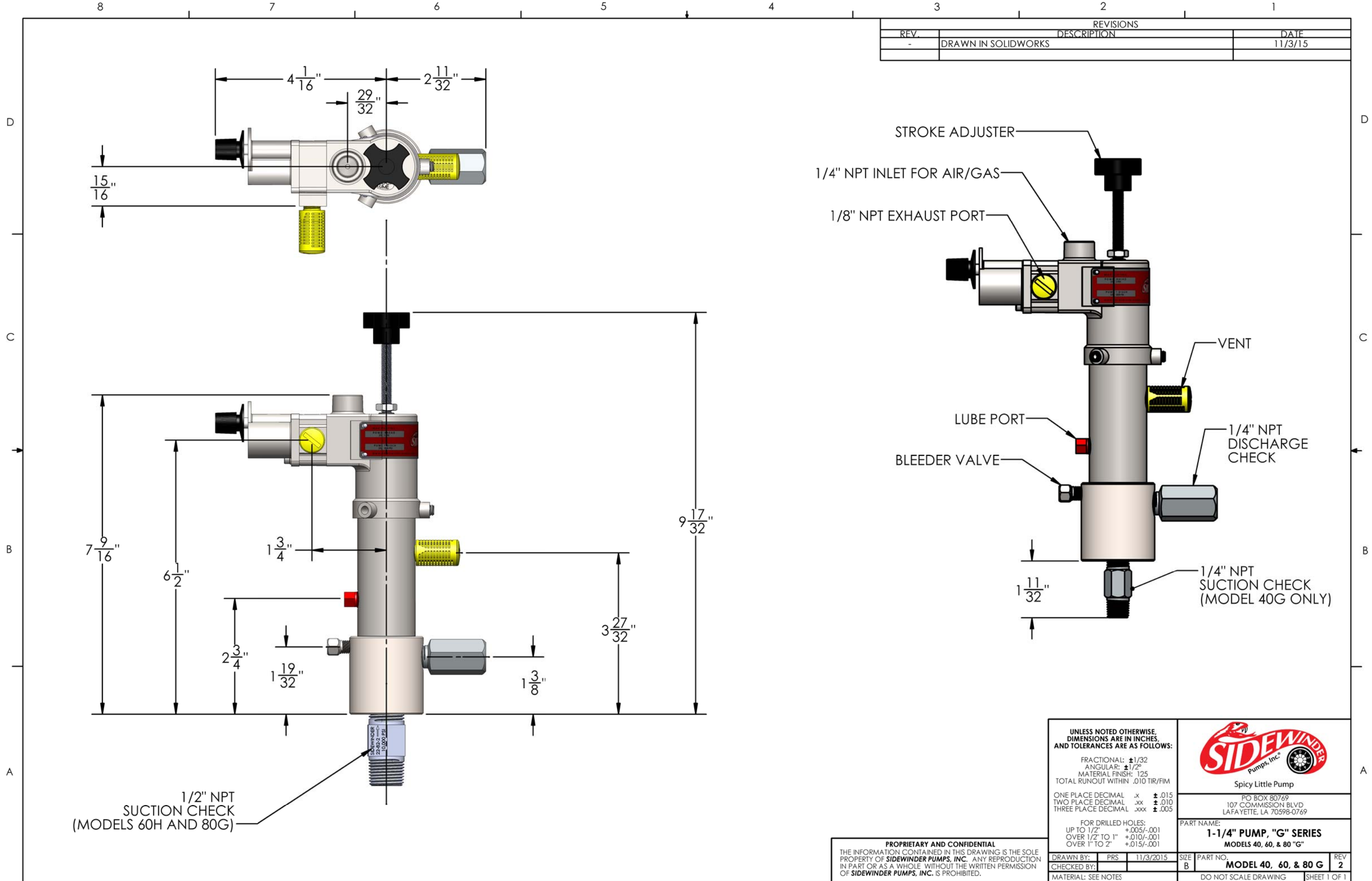


REVISIONS		
REV.	DESCRIPTION	DATE
-	DRAWN IN SOLIDWORKS	11/3/15

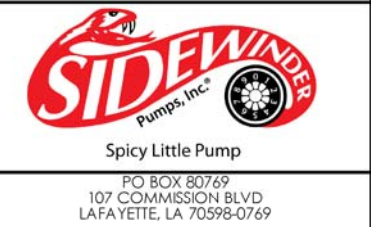


UNLESS NOTED OTHERWISE, DIMENSIONS ARE IN INCHES, AND TOLERANCES ARE AS FOLLOWS:

FRACTIONAL: $\pm 1/32$
 ANGULAR: $\pm 1/2^\circ$
 MATERIAL FINISH: 125
 TOTAL RUNOUT WITHIN .010 TIR/FIM

ONE PLACE DECIMAL .x $\pm .015$
 TWO PLACE DECIMAL .xx $\pm .010$
 THREE PLACE DECIMAL .xxx $\pm .005$

FOR DRILLED HOLES:
 UP TO 1/2" +.005/- .001
 OVER 1/2" TO 1" +.010/- .001
 OVER 1" TO 2" +.015/- .001



PROPRIETARY AND CONFIDENTIAL

THE INFORMATION CONTAINED IN THIS DRAWING IS THE SOLE PROPERTY OF **SIDEWINDER PUMPS, INC.** ANY REPRODUCTION IN PART OR AS A WHOLE WITHOUT THE WRITTEN PERMISSION OF **SIDEWINDER PUMPS, INC.** IS PROHIBITED.

DRAWN BY: PRS	11/3/2015	SIZE B	PART NO. MODEL 40, 60, & 80 G	REV 2
CHECKED BY:			DO NOT SCALE DRAWING	SHEET 1 OF 1
MATERIAL: SEE NOTES				